

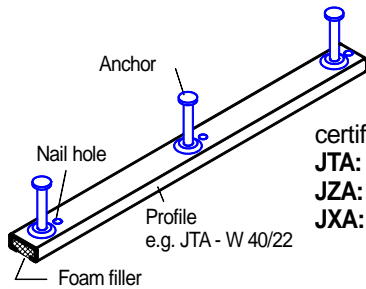
# Installation Instructions

for JORDAHL-anchor channels JTA , JZA and JXA

JTA - 04/06

Page 1 / 2

## JORDAHL-anchor channel typ JTA - ready to install:



certificates of approval:

**JTA:** Nr. Z-21.4-151

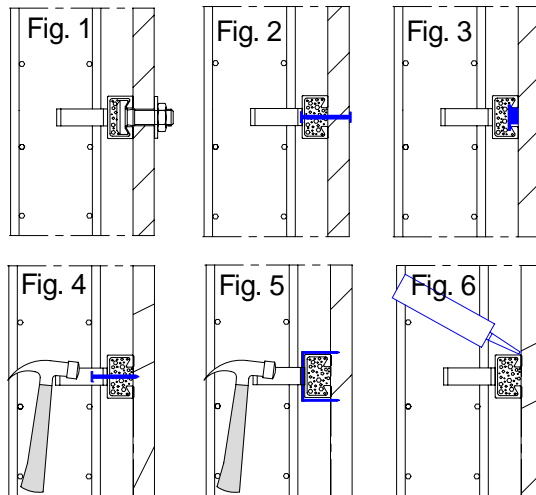
**JZA:** Nr. Z-21.4-741

**JXA:** Nr. Z-21.4-1690

JORDAHL-anchor channels are supplied ready for installation, complete with foam filler and nail holes.

The channel is installed in conjunction with the reinforcement and must be flush with the finished concrete surface. In order to avoid displacement during the casting process, the channels are fastened to the formwork.

## Fastening to the formwork:



### Fixing to steel formwork:

**Figure 1:** Use JORDAHL "T" bolts and nuts to fix through drilled hole in the steel formwork.

**Figure 2:** Riveting through steel formwork.

**Figure 3:** Using magnetic fixings to the steel formwork.

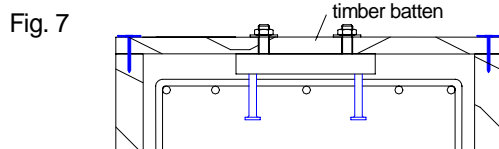
### Fixing to timber formwork:

**Figure 4:** Pre punched holes in the back of channels allow for nailing to timber formwork.

**Figure 5:** Nailing to the channels with tacks or staples.

**Figure 6:** Use of sealant if uneven formwork leaves excessive gaps.

## Fixing anchor channels at the top:

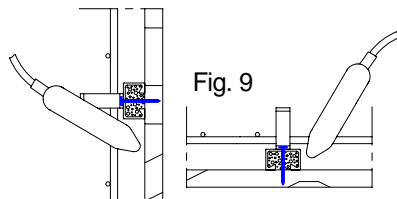


When channels are required in the tops of upstands, they must be secured in place to prevent moving or sinking into the concrete.

**Figure 7:** Fixing the anchor channel to timber batten on the side formwork (e.g. JORDAHL "T" bolt).

## Regular concentration of concrete:

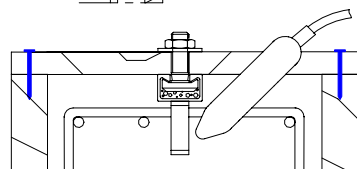
Fig. 8



**Figure 8:** When channels are fixed to the sidefaces of the formwork side the concrete must be carefully compacted under the channel. Insufficient compression of the concrete reduces the anchor channel load capacity.

**Figure 9:** Channels in soffits must have a uniform concentration of the concrete around the channel.

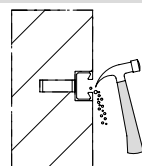
Fig. 10



**Figure 10:** Channels cast into the top surface of concrete upstands must be securely held in place. This construction prevents moving and sinking of the anchor channel. The concrete must be fully compacted under the channel and around the anchors.

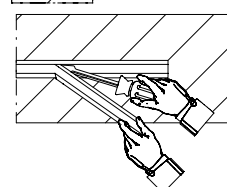
## Remove of the channel infill:

Fig. 11



After removing the formwork the channel is cleaned on the outside to remove residue. The channel filling which prevented the intrusion of concrete during casting should be removed.

Fig. 12



**Figure 11:** foam infill:

For the purpose of removing the channel filler a hammer, or a hook can be used.

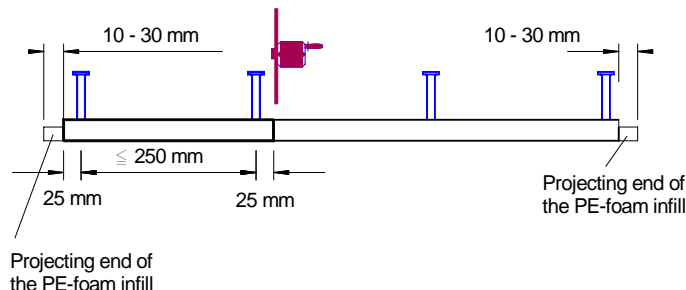
**Figure 12:** PE-foam infill:

PE-foam infill can be pulled out in one piece by hand and with help of a screwdriver.

## Cutting of anchor channels:

JORDAHL normally supplies pre manufactured short channels or lengths manufactured to order. Channels can also be cut to the required length on site, according to the following guidelines:

- Each channel must have a minimum of **two anchors**.
  - The cut must be located **25\*) mm** behind an anchor.
  - After the cutting of anchor channels, the cut surface of galvanized channels has to be coated with zinc.
  - Cutting the projecting end of the PE-foam infill before installation the anchor channel (not necessary for polystyren filling).
- \*) For certain sizes the end distance of round anchors may be increased from 25 mm to 35 mm.



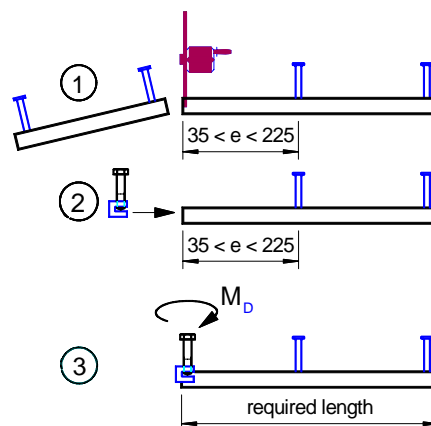
## Production of short channels with site applied anchors:

Site applied anchors are components according to approval Z-21.4-151.

Cut the JORDAHL-anchor channels to the required length on site. The cut must run perpendicular to the channel axes. The smallest projecting end "e" from an anchor of the JORDAHL-anchor channel is 35 mm and the longest projecting end is 225 mm.

Select the site applied anchor type for the JORDAHL-anchor channel and connect it to the channel.

Apply the required end-anchor typ and tightening torque.  
Typ E1 M8/10 Nm and Typ E2 M10/20 Nm.



Headquarter:  
Germany  
Deutsche Kahneisen  
Gesellschaft mbH  
Nobelstraße 51-55  
12057 Berlin

Phone: +49 30 6 82 83 02  
Fax: +49 30 6 82 83 497  
Technical  
Dept.: +49 30 6 82 83 498  
Sales: +49 30 6 82 83 494

info@jordahl.de  
http://www.jordahl.de

Austria  
GHL Bautechnik  
Caracallastr. 16  
A-4470 Enns  
Phone: +43 7223 819 19 0  
Fax: +43 7223 819 19 33  
office@ghl-bau.at

BELGIUM  
N.V. Plakabeton S.A.  
Industrielaan 2  
B-1740 Temat  
Phone: +32 2 58 22 94 5  
Fax: +32 2 58 35 16 8  
dirk.vanloo@plakabeton.be

CZECH REPUBLIC  
J & P Stavebni Technika  
s.r.o.  
Prumyslova 5  
CZ-10850 Praha 10  
Phone: +420 2 72 70 07 01  
Fax: +420 2 72 70 37 37  
info@jpcz.cz

DENMARK  
Jordahl & Pfeifer Byggeteknik  
Risgardevej 66, Risgarde  
DK-9640 -Farsø  
Phone: +45 98 63 19 00  
Fax: +45 98 63 19 39  
info@jordahl-pfeifer.dk

Denmark  
Universal Fastgorelse A/S  
Møllehaven 6  
DK-4040 Jyllinge  
Phone: +45 46 73 10 60  
Fax: +45 46 73 04 15  
DK@unifast.dk

GREAT BRITAIN  
J & P Building Systems Ltd.  
Unit 5, Thame 40  
Jane Morbey Road  
GB-Thame/Oxon OX9 3RR  
Phone: +44 18 44 215200  
Fax: +44 18 44 263257  
enquiries@jandpbuidingsystems.com

HONG KONG  
Sino Linker Limited  
Room 1702, Kodak House 2,  
321 Java Road, North point  
HK-HongKong  
Phone: +852 22 85 80 38  
Fax: +852 22 85 83 37

HUNGARY  
Pfeifer-Garant Kft.  
Gyömrői u. 128  
H-1103 Budapest  
Phone: +36 1 260 10 14  
Fax: +36 1 262 09 27  
pfeifer.garant@axelero.hu

ITALY  
Frank Italy GmbH  
Industriezone, Mühlen 3  
I-39032 Sand in Taufers (BZ)  
Phone: +39 0474 65 90 08  
Fax: +39 0474 65 90 18  
info@frank-italy.com

NETHERLANDS  
Vebo-Staal B. V.  
Industrieterrein  
Röntgenweg 3  
NL-3752 LJ Bunschoten  
Phone: +31 33 29 92 687  
Fax: +31 33 29 92 690  
hhoeb@vebo-staal.nl

Norway  
Pretec A/S  
Postboks 102  
N-1740 Borgenhaugen  
Phone: +47 69 10 24 60  
Fax: +47 69 16 71 41  
even@pretec.no

POLAND  
J & P Technika Budowlana  
Sp.z.o.o.  
Ul. Wroclawska 68  
PL-55-330 Krecice/Wroclaw  
Phone: +48 71 39 68 364  
Fax: +48 71 39 68 106  
biuro@jordahl-pfeifer.com.pl

Russia  
BauMontek  
pos.Vnukowo,  
ul. Zentralnaja, 16, str.6  
RUS-119027 Moscow  
Phone: +7 495 436 77 12  
Fax: +7 495 436 73 30  
info@baumontek.ru

SAUDI ARABIA  
Rolaco Trading & Contracting  
Building Materials Division  
Al-Suleiman Bldg,  
P.O. Box 222 Medinah Road  
SA-21411 Jeddah  
Phone: +966 2 651 80 28  
Fax: +966 2 653 42 80

SINGAPORE  
J&P Building Systems Pte. Ltd.  
601 Sims Drive  
#01-06 Pan-I complex  
Singapore 387382  
Phone: +65 65 69 61 31  
Fax: +65 65 69 52 86  
jandpsgp@singnet.com.sg

Slovakia  
J & P Stavebni Technika  
s.r.o.  
Prumyslova 5  
CZ-10850 Praha 10  
Phone: +420 2 72 70 07 01  
Fax: +420 2 72 70 37 37  
info@jpcz.cz

SPAIN-Portugal  
J&P Tecnicas de Anclaje s.l.  
Avda. de los Pirineos,  
no. 25, nave 20  
E-28700 S.S. de los Reyes(Madrid)  
Phone: +34 91 65 93 185  
Fax: +34 91 65 93 139  
jp@jp-anclajes.com

SWEDEN  
Pre Tec Precast Technology AB  
Traktorgatan 13  
S-44240 Kungälv  
Phone: +46 303 243 080  
Fax: +46 303 913 10  
info@pretec.se

Switzerland  
Ankaba Ankerstechnik und  
Bauhandel AG  
Zürichstraße 38a  
CH-8306 Brüttisellen  
Phone: +41 1 8 07 17 17  
Fax: +41 1 8 07 17 18  
info@ancaba.ch

U.A.E.  
EMIRATES GERMAN BUILDING  
Material Trading L.L.C.  
P.O.BOX18917  
Al-Mezher Build.Shop No.11,12  
Al Qusase area,Damascus Street  
UNITED ARAB EMIRATES-DUBAI  
Phone: +971 4 267 66 44  
Fax: +971 4 267 66 46  
gemirate@emirates.net.ae